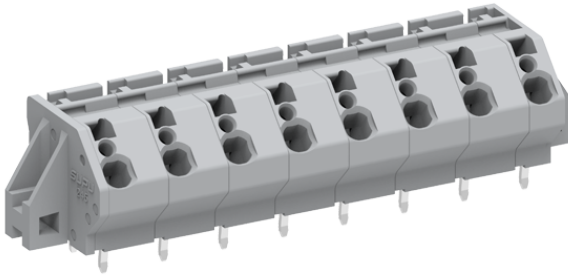


Product Type: Fixed terminal

Product Name: 245408-020



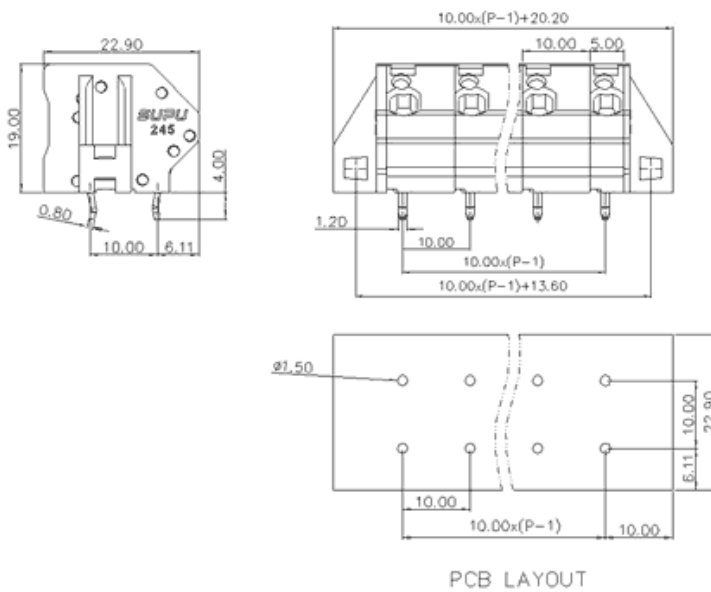
Product Description: Pitch: 10mm Rated

Voltage : 1000V Rated Current: 32A Connection





method : Push-in spring connection

colour : customizable

Product Size



Parameters

 SUPU ID	245408/020
 Pitch	10.0
 Number of levels	Single layer
 Number of connections	8

☞ Connection method	Spring cage connection
☞ Protection Level	IP20
☞ Operating temperature range	-40~+105°C
☞ Insulation material	PA66
☞ Insulation material group	I
☞ Contact material	Copper alloy
☞ Contact plating	Sn,Plated
☞ Color	Green/Black/Blue/Grey/Orange/Red

Technical data

☞ IEC Rated Current	32A
☞ IEC Rated Voltage	1000V
☞ Overvoltage category	III/III/ II
☞ Degree of pollution	3 2 2
☞ Rated impulse voltage	8.0KV 8.0KV 8.0KV
☞ UL Rated Current	20A 20A 10A
☞ UL Rated Voltage	300V 150V 300V
☞ Conductor cross section rigid	0.2-4.0mm ²
☞ Conductor cross section flexible	0.2-4.0mm ²
☞ Conductor cross section flexible,with ferrule	0.2-4.0mm ²
☞ Locking screw Specification	-
☞ Locking screw torque	-
☞ Fixed Screw Specification	-
☞ Stripping length	8-9mm

Order No

245408/020

Ningbo SUPU Electronics Co., Ltd.

Address: No. 150, Xinxing 4th Road, High-tech Industrial Development Zone,
Cixi City, Zhejiang Province, China

Zip code: 315303

Switchboard: +86 574-63288158

Fax: +86 574-63288170

E-mail:supucontact@supu.cn

Service Hotline: 400-626-6336



Wechat