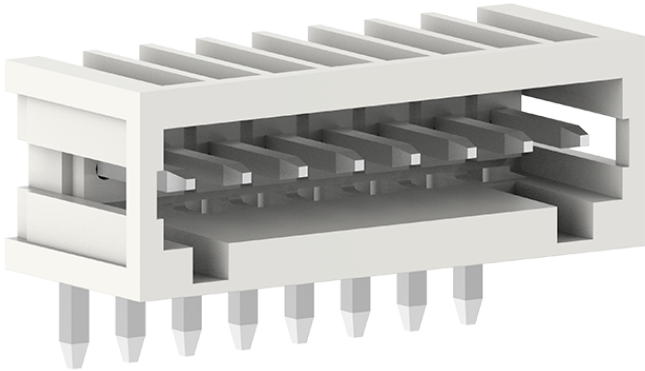


Product Type: Plug-in terminal-Socket

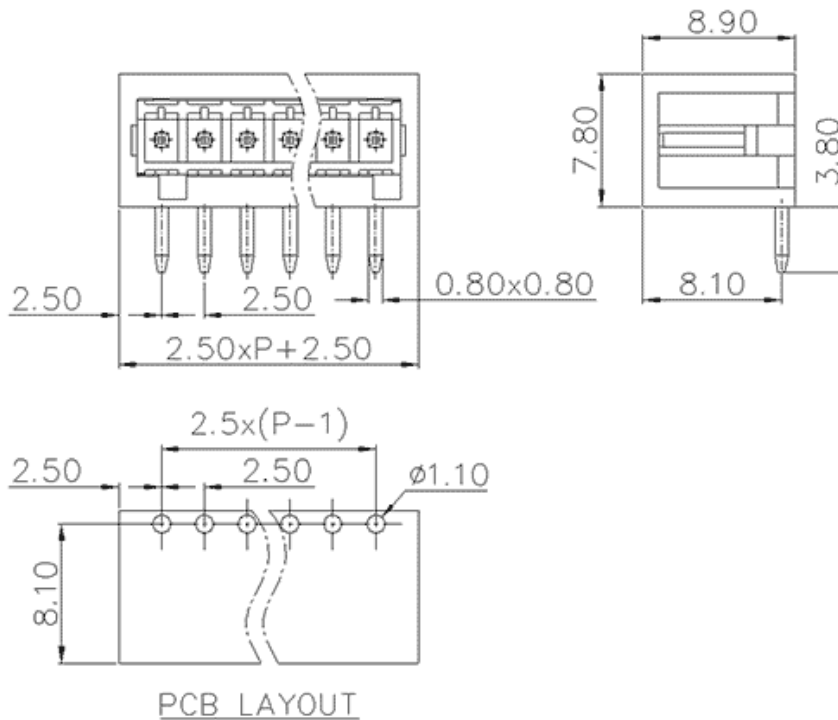
Product Name:425311

Product Description: Pitch:2.5mm Rated

Voltage : 160V Rated Current:4A colour : White
Grey



Product Size



Parameters

☞ SUPU ID	425311
☞ Pitch	2.5
☞ Number of levels	Single layer
☞ Number of connections	11

☞ Connection method	-
☞ Protection Level	IP20
☞ Operating temperature range	-40~+105°C
☞ Insulation material	PA66
☞ Insulation material group	I
☞ Contact material	Copper alloy
☞ Contact plating	Sn,Plated
☞ Color	白灰色

Technical data

☞ IEC Rated Current	160V
☞ IEC Rated Voltage	4A
☞ Overvoltage category	- III II
☞ Degree of pollution	3 2 2
☞ Rated impulse voltage	- 2.5KV 2.5KV
☞ UL Rated Current	5A - 5A
☞ UL Rated Voltage	150V - 150V
☞ Conductor cross section rigid	-
☞ Conductor cross section flexible	-
☞ Conductor cross section flexible,with ferrule	-
☞ Locking screw Specification	-
☞ Locking screw torque	-
☞ Fixed Screw Specification	-
☞ 固定螺钉扭矩	-

☞ Stripping length	-
☞ Use group	B/C/D
☞ Rated cross section	-

Commercial data

☞ Order No	425311
------------	--------

Ningbo SUPU Electronics Co., Ltd.

Address: No. 150, Xinxing 4th Road, High-tech Industrial Development Zone,
Cixi City, Zhejiang Province, China

Zip code: 315303

Switchboard: +86 574-63288158

Fax: +86 574-63288170

E-mail:supucontact@supu.cn

Service Hotline: 400-626-6336



Wechat